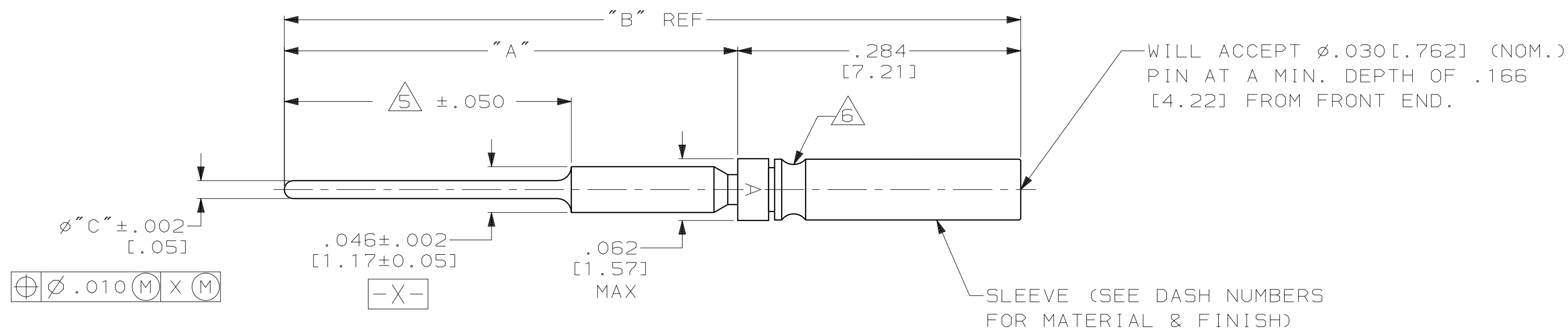
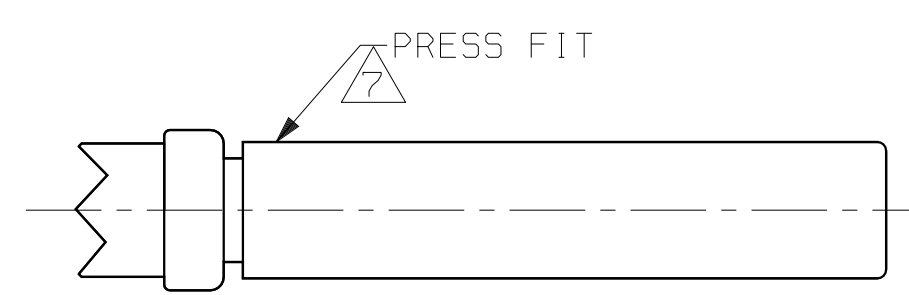


THIS DRAWING IS UNPUBLISHED. RELEASED FOR PUBLICATION, 19 .
 © COPYRIGHT 19 BY AMP INCORPORATED. ALL INTERNATIONAL RIGHTS RESERVED.

LOC	DIST	P	F	ZONE	LTR	REVISIONS	DATE	APPD
DF	DO				Y	REV PER 0H14-0553-04 CT	8-04	DM
						DESCRIPTION		



VIEW E



VIEW F
SAME AS VIEW E
EXCEPT AS SHOWN

- 1. INSERTION/EXTRACTION TOOL AMP P/N 91067-1.
- 2. CONTACT BODY AND HOOD FINISH:
GOLD PLATED .000050 [0.0127] TO .000100 [0.0254] THICK PER ASTM-B-488, TYPE II, GRADE C OVER COPPER PLATE
.000100 [0.0254] TO .000250 [0.0635] THICK PER ASM 2418.
- 3. CONTACT BODY FINISH:
GOLD PLATED .000050 [0.0127] TO .000100 [0.0254] THICK PER ASTM-B-488, TYPE II, GRADE C OVER COPPER PLATE
.000100 [0.0254] TO .000250 [0.0635] THICK PER ASM 2418.
HOOD FINISH:
PASSIVATED PER ASTM-A-380
- 4. CONTACT BODY FINISH:
GOLD PLATED .000050 [0.0127] TO .000100 [0.0254] THICK PER ASTM-B-488, TYPE II, GRADE C OVER NICKEL PLATE
.000050 [0.0127] TO .000100 [0.0254] THICK PER QQ-N-290,
- 5. THIS AREA IS SOLDER DIPPED. 207684-8 ONLY.
- 6. SLEEVE MAY BE CRIMPED OR DIMPLED ONTO CONTACT BODY.
- 7. SLEEVE MAY BE PRESS FIT, CRIMPED OR DIMPLED ONTO CONTACT BODY.
- 8. CONTACTS MEET ALL APPLICABLE PERFORMANCE REQUIREMENTS OF MIL-C-39029.
- 9. CONTACT BODY MATERIAL:
LEADED NICKEL COPPER OR COPPER ALLOY PER ASTM-B-197
HOOD MATERIAL:
BRASS PER ASTM-B-36 OR COPPER ALLOY PER ASTM-B-197
- 10. CONTACT BODY MATERIAL:
LEADED NICKEL COPPER OR COPPER ALLOY PER ASTM-B-197
HOOD MATERIAL:
STAINLESS STEEL PER ASTM-A-240
- 11. CONTACT BODY MATERIAL:
BERYLLIUM COPPER PER ASTM-B-197
HOOD MATERIAL:
STAINLESS STEEL PER ASTM-A-240
- 12. PRELIMINARY NOT RELEASED FOR PRODUCTION

12	6	VIEW E	2	9	.020 [0.51]	.949 [24.10]	.665 [16.89]	207684-9
	5 6	VIEW E	2	9	.018 [0.46]	.744 [18.90]	.460 [11.68]	207684-8
	7	VIEW F	3	10	.025 [0.64]	.844 [21.44]	.560 [14.22]	207684-7
	7	VIEW F	4	11	.018 [0.46]	1.094 [27.79]	.810 [20.57]	207684-6
	7	VIEW F	4	11	.018 [0.46]	.844 [21.44]	.560 [14.22]	207684-5
	7	VIEW F	4	10	.025 [0.64]	.844 [21.44]	.560 [14.22]	207684-4
	6	VIEW E	2	9	.018 [0.46]	.744 [18.90]	.460 [11.68]	207684-3
	6	VIEW E	2	9	.018 [0.46]	1.094 [27.79]	.810 [20.57]	207684-2
	6	VIEW E	2	9	.018 [0.46]	.844 [21.44]	.560 [14.22]	207684-1
REMARKS	SEE VIEW	FINISH	MATERIAL	ØC	DIM B	DIM A	PART NO	

DO NOT SCALE PRINT. UNLESS SPECIFIED DIMENSIONS IN INCHES [mm] TOLERANCES ON : 2 PLC DEC ± - 3 PLC DEC ± .005 [0.127] ANGLES ± -	DR 11-15-91 T. ALEXANDER	AMP Incorporated Harrisburg, PA 17105-3608
	CHK 11-18-91 F. KINSEY	
MATERIAL SEE ABOVE	APPD 11-18-91 F. KINSEY	NAME
	APPD 11-18-91 F. KINSEY	SOCKET CONTACT, POSTED SIZE 22D
FINISH SEE ABOVE	PRODUCT SPEC -	SIZE
	APPLICATION SPEC -	CAGE CODE 00779
	WEIGHT -	DRAWING NO 207684
		SCALE 10:1
		SHEET 1 OF 1